



“THE MORCHARD MESSENGER”

THE INDEPENDENT VILLAGE NEWSLETTER

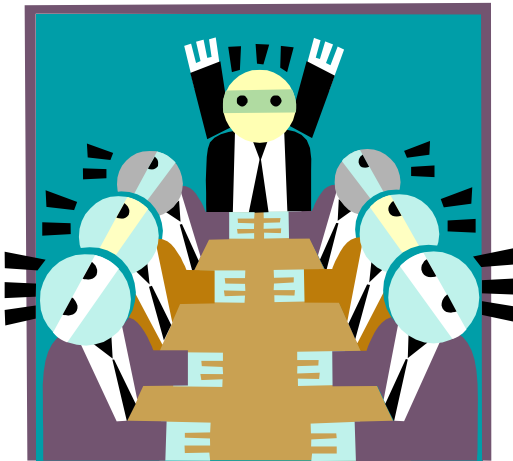
www.morchardnet.org.uk

No. 199

January 2012

SPONSORED THIS MONTH BY THE PARISH COUNCIL

A NEW YEAR'S MESSAGE FROM YOUR PARISH COUNCIL



On behalf of all of your Parish Councillors, I would like to take this opportunity to wish everyone in our Parish

a very Happy New Year

and to thank you all for the part you play in making Morchard Bishop such a good place to live.

As Europe lurches from one crisis to another and the very future of the “Eurozone” is in doubt, this has not dampened the enthusiasm, initiatives and generosity that living in Morchard Bishop seems to engender.

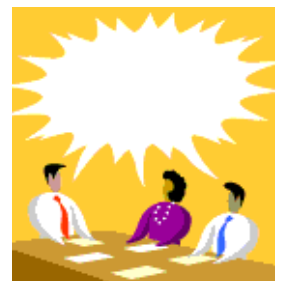
The year has seen the formation of the MB Charity Group of ladies who have taken it upon themselves to organize pure fund raising events for good causes. Their latest venture, the recent Hoe Down, raised the magnificent sum of over £1,100 in aid of the BBC Air Ambulance Appeal (which has incidentally now reached its target of £600,000) Well done ladies!

After last year's snow and ice, your Parish Council has acquired a salt/grit spreader and an additional 4 tons of salt/grit which will be stored at various locations around the village (this is in addition to the existing grit bins). A team of trained volunteers is standing ready under the leadership of our Snow Tzar, Roger Field, ready to try to alleviate the more serious problems that can arise due to ice and snow on our local roads this winter. Hopefully he and his team will not be needed!

Your Parish Council continues to try and achieve the highest standards of service, but it is a fact of life that we will never be able to please everyone. Planning applications take up a lot of our time and while dealing favourably with most applications there are occasionally those that our Councillors do not feel they can support.

Perennial problems have dogged us again this year, anti-social behaviour being one (and particularly the predilection of some of our youths to consider that our bus shelter is a public toilet). Pot holes seem, with a few notable exceptions, to be repaired more promptly now and the red dog bins are being used and in fact to such an extent that your council is considering purchasing additional bins.

Parishioners are always welcome to come along to our Parish Council Meetings held on the first Monday of every month. The Agenda is posted on the parish notice board from the Friday prior to meetings and Minutes are posted on the Morchard Bishop web site.



A Very Happy New Year to Everyone!

Keith Davies,
Chairman, Morchard Bishop Parish Council

ROBINSON PLANT

Peperlake Cottage, Morchard Bishop, EX17



01363 877389 or 07971 857 450
email jr4109@eclipse.co.uk

Vicky Youngman



Driving Standards Agency



Approved Driving Instructor
16+ Off Road Training
Theory and Hazard Perception Training
Pass Plus
Intensive Courses

Registered Fleet Driver Trainer
Driver Risk Assessment and Training
Health and Safety Compliance
Driver and Vehicle Efficiency
Ongoing Assessment

Tel: 01363 83958

Mob/Text: 07890543574

www.vickyyoungman.co.uk

Morichard Bishop Pre-School



Church Rooms Morichard Bishop

Set in the heart of Morichard Bishop village, we provide fun (and great quality care!) within a small and personal environment for children aged 2 to 5. The strong links to the village primary school ensure that our children receive fantastic preparation for their reception year through regular visits for play and familiarisation.

- Open mornings, Mon to Thu
- Lunch club Mon, Tue and Thu
- Early years funding and childcare vouchers accepted
- Weekly school visits to Morichard Bishop Primary School

Call Debbie for more information

on **07816 967140**



MORCHARD BISHOP ALLOTMENT ASSOCIATION

Made any New Year Resolutions? A new diet? Stop smoking? Take more exercise? A good way to improve your health both inside and out is to GROW-YOUR-OWN.

Our annual meeting takes place shortly and this is when existing members decide whether to resign or renew their subscription. If you've not yet added your name to our Waiting List, it's not too late to do something about it now.

Please phone **Teresa on 877205** or email
secretary@morichardbishopallotments.org.uk

Ensure you don't miss this annual window of opportunity.

"Treasure Island"

Morichard Bishop Memorial Hall

9th, 10th, 11th February 2012



Tickets will be available
after Christmas from :

Annie Robinson
15, Old Rectory Gardens
(tel : 877297)
(£7 adults £3 children)

(proceeds to Memorial Hall Funds)

FOR EVERYONE

I gave no gifts at Christmas, I give them all year through,
I give my love and friendship, a gift I know is true.

It doesn't need posh wrapping, It's there for all to see,
I wish that I could give far more, but there's only one of me.

So everyone can have a share, whatever I can do,
To help to make life happier, I'll do it all for you.

So when the cards and trimmings go, there's nothing left to see,
The gift I give at Christmas, It's still here – it's only me.

You won't break it, you won't lose it, and wherever you may roam,
My thoughts and love will always fit, someplace inside your home.

Mrs J Brooks, Glos.
Submitted by Hilda Partridge

VILLAGE NOTICES

ST. MARY'S CHURCH

Services in January

Jan	1	10.30	Service at Bow. Eucharist
Jan	8	10.30	Common Worship, Eucharist
Jan	15	10.00	Book of Common Prayer
Jan	22	10.00	Family service
Jan	29	10.30	Candlemass. Mission Community Eucharist

MORCHARD BISHOP MEMORIAL HALL

Table Top Sale Saturday 14th January
10 am to 12.00 noon

Tea, coffee, toast and bacon baps. Books. Household Goods, Hand Crafted Cards, Home Made Cakes, Pasties and Scones, Organic free range eggs and lots more.

Come and visit us for bargains galore
To book a table ring Sonia on 877349

For Hall Bookings

Please contact Carol Hutchings on 01363 877259

COFFEE MORNINGS

10:00 – 12 noon

Saturday	7 th January	Bowling Club
Saturday	14 th January	Table Top Hall Committee
Saturday	21 st January	Morchard Maids
Saturday	28 th January	Chapel



EMMANUEL METHODIST CHURCH

Services in January

Jan	1	11.00	Rev J Budd (Family Service)
		18.00	No Service
Jan	8	11.00	A, Eaton
		18.00	T. Nott
Jan	15	11.00	F. Budd
		18.00	Rev J Budd
Jan	22	11.00	Rev J Budd
		18.00	A. Chamberlain
Jan	29	11.00	D, Gregory
		18.00	R. Sambles

WOMEN OF MORCHARD > OPEN DOOR

There is NO MEETING in January.

but

Meetings will start again in February under
the new name of

OPEN DOOR

For more information telephone
Rosemary at 877501
or Diana at 877209

Christmas and New Year Surgery Closing Times

Christmas

The surgery will be closed on Monday 26th December and Tuesday 27th December

New Year

The surgery will be closed on Monday 2nd January

Please remember to order your medication in time and ensure that you have sufficient to cover the whole holiday period.

We wish you a very Happy Christmas and Peaceful New Year

Morchard Bishop Surgery

JANUARY 2012 DIARY DATES

Wed	4	11.30	Welcome Club	Tiverton Hotel	Lunch
Sat	7	18.30	Emmanuel Church	Emmanuel Church	New Year Party
Tues	10, 17, 24, 31	10.00	Emmanuel Church	Lower Room	Coffee Mornings
Wed	11	14.30	W.I.	Memorial Hall	Fun Quiz & Bring and Share
Wed	11	19.30	Gardening Club	Memorial Hall	Social Evening & Bring & Share Buffet
Sat	14	10.00	Memorial Hall	Memorial Hall	Table Top Sale
Mon	16	19.30	Morchard Maids	London Inn	Pamper Evening with Sabrina
Wed	25	19.00	Yarn Stormers	London Inn	Knitting & Crochet Club

**PLEASE NOTE: The diary of events in the parish is maintained by Helena Sykes, 16, Old Rectory Gardens,
Tel 01363 877434, email heli.col@btinternet.com who will record events up to 6 months in advance.**

Marshalls

*Bespoke furniture makers
and joiners of traditionally
made;*

*Kitchens, Dressers, Doors,
Windows-inc sash,
Radiator covers,
Summer houses, Staircases
etc*

*All aspects of carpentry
works undertaken.*

*Using a variety of
hardwoods and softwoods.*

*Call Tom Mogford on
01884 860652 or 07841779608*



WOMEN OF MORCHARD

In true Christmas spirit we were entertained at our December meeting by Sue Gales who told us lots of interesting facts about Christmas music.

Her talk, illustrated at the keyboard of course, covered serious classical music, such as The Messiah, right through to Rudolph the red nosed reindeer! We heard about Christmas hymns, various European carols and our traditional carols and joined in singing some of them. While we had our mince pies and Christmas cake we heard Victor Healy Hutchinson's carol Sympathy, bringing back childhood memories for some of us. We ended by pulling crackers to complete the party atmosphere.

There will be no meeting in January but we start again in February under our new name of "Open Door". See page 10 of last month's Morchard Messenger.

Rosemary Taylor

BE PREPARED FOR WINTER!

Hopefully none of us will be needing this, but it's all about awareness and planning...

Devon County Council has released its Winter Emergency Management document which contains useful advice for the winter period. Some excerpts given below, but if you want more information go to the following web sites:

www.highways.gov.uk/knowledge/333.aspx

www.devon.gov.uk/index/transportroads/roads/road_safety/driversandbikers/winterdriving.htm

www.devon.gov.uk/emergency_planning.pdf

Every year mortality rises by 19% in the winter months. The National Cold Weather Plan was introduced on 2nd November this year and its purpose is to reduce winter deaths by raising public awareness and triggering actions to support vulnerable people who have health, housing or economic circumstances that increase their risk.

Cold weather alerts are issued by the Met Office at:

www.metoffice.gov.uk/weather/uk/coldweatheralert

Winter Driving

The British winter is unpredictable (that's an understatement – Ed!). Bad weather can strike suddenly so the best advice when severe weather hits is to stay off the road. If you must drive, remember over 90% of crashes are attributed to human error, so make sure you are prepared and drive for the conditions.

Allow more time for your journeys. Take warm clothes with you and also water and a hot drink, a charged mobile phone, a blanket and a shovel. Prepare your car properly. Drive slowly, no sudden manoeuvres, use your headlights (in poor visibility you actually see the car before you see sidelights!), keep a safe distance from the vehicle in front – braking distance can be more than 10x normal!

4X4 Reponse

DC4X4R is a group of socially aware 4x4 drivers available and wanting to use their vehicles and driving skills to assist the local community in times of genuine emergency. At any one time their membership veers between 60 and 80 active members through Devon and Cornwall (the majority are in Devon). They are co-ordinated by the police

- And of course we have our own Snow Warden, Roger Field
- – see page 11 for contact details.

Paddocktend



Complete - Hedge, Tree and Grass care

Weed control - tractor, A.T.V. and spot spraying

N.P.T.C. certificate
Garden and Field

Tel / Fax: 01363 85093
Mobile: 07849067727

E-mail
steve.sharlandfarm@tiscali.co.uk

S&H JOINERY of Eggesford

**Bespoke maker of staircases,
windows, doors & furniture**

Tel. 07964 904650

Email:

shjoineryeggesford@gmail.com

www.sandhjoineryofeggesfordex18.co.uk

ST MARY'S CHRISTMAS QUIZ RESULTS

General Knowledge:

1. What is the value of letter B in Scrabble? 3
2. What is a group of bears called: Sleuth or sloth
3. Maids in a milking: 8
4. UK's first National Park: Peak District
5. Puritans banned carols
6. A funambulist is a tight-rope walker
7. A long legged snooker rest is a spider
8. Brides in China wear red
9. An avocado has the most calories
10. Dad's army was set in Warmington on Sea
11. A cat has 4 rows of whiskers (some have more)
12. Zodiac sign was an archer
13. Mark 6 is 200 degrees centigrade
14. Quinsy affects tonsils
15. I love to boogie by T-Rex is in Billy Elliott
16. A polo team has 4 players each side
17. The capital of Venezuela is Caracas
18. The Estonian Flag is from vertical top: white, blue and black
19. The Mona Lisa is in the Louvre, Paris
20. Downton Abbey was filmed at Highclere Castle

Wild Flowers:

1. clematis vitalba Old Man's beard
2. arum maculatum Lords and Ladies
3. Taraxacum officinale dandelion (apologies for 3/4 computer error)
4. campanula rotundifolia harebell
5. Ionicera periclymenum honeysuckle
6. digitalis purpurea foxglove
7. primula vulgaris primrose
8. Erica cinerea heather
9. eryngium maritimum sea holly
10. ranulculus acris buttercup

Famous People:

Singing twins in need of a conditioner: Jedward

Round objects in a political setting: Ed Balls

A black moustache in the Limelight: Charlie Chaplin

Monk's apparel and a disciple's name can make your TV fame: Simon Cowell

A wild berried tree sporting a prayerful beard: Rowan Williams

This 'shirty' guy on his uppers is nagged by his silly courtier whose name is slightly less poisonous than our only venomous snake: Baldrick

A dapper, kind of 'cool' flightless bird transforms into an English 'songbird' full of jazzy melody. Cut out the 'i'

- A receipt from a card shop

Tom Pearce and a feminine other share a moor connection: Anne Widdecombe

He of Italian marble exchanges a fig leaf for a Scottish 'cover up.' You could swap the second part of the clue for a Spanish comedy film star: David Cameron (apologies from question setter, she assumed that Cameron Diaz was Spanish but, of course, she is American)

A fishy member of the cod family is 'artily' combined with the coughing local sweet maker: Jackson Pollock

An old-fashioned way of storing hay or straw makes a 'fishy' connection in Cornwall with a large drinking vessel out of place in UK: Rick Stein

Clothing:

It's petrol driven, an allotment activity where a foot is needed plus AN: cardigan

Female jack: jacket

Involves famous cat or winter walking apparel: boots

Belonging to a denim lady wearer: jeans

Books:

Master of Hoops: Lord of the Rings

Vanity and bias: Pride and Prejudice

Departed accompanied by breeze: Gone with the wind

Fonda Lake by Charlotte: Jane Eyre

Male Offspring and paramours: Sons and Lovers

Mechanical citrus fruit: Clockwork Orange

A route to the subcontinent: A Passage to India

Pride Blonde: Vanity Fair

Beckham Metal Meadow: David Copperfield

Hispaniola, Smollet, Flint, etc: Treasure Island

Not a ranch for humans: Animal Farm

Three flights of thirteen: 39 steps

Devon Place Names:

Regal River crossing: Kingsbridge

Good Place for a summer break: Holsworthy

Where to inter a rascal: Cadbury

Display a small river: Shobrooke

1970s PM turned to nasty: Tedburn St Mary

Ship's complement prefer it: Cruwys Morchard

Well, it is famous for hops: Kentisbeare

Sweet place of worship: Honeychurch

Was on a candle: Exwick

Part of the face of an idiot: Twitchen

Part of the universe displeased: Starcross

Strange way to treat pig's meat: Powderham

Continued on Next Page



COUNTRY FILE



At the beginning of the New Year it is difficult to see what the future will bring. When financial institutions are crashing earthwards like shooting stars the countryside as usual offers solace. The fields are still green after the mild autumn, the water courses have been replenished by the rains and the promise is 'I do set my bow in the cloud and it shall be for a token between me and the earth?' The trees and hedges are still full of berries and the tawny owl is hooting in the wood.

A vista is described as a view or a prospect through an avenue or long opening. When walking it can be a turn in the lane and the hedgerow trees lead to a view or Dartmoor. This idea has been developed through time with the design of gardens. In the sixteenth century a formal garden or lady's pleasance lay round the manor house.



The seventeenth century saw the development of flower gardens and the orchard with green walks and the pleached bower. The flower garden was arranged in rectangular and squares with box and lavender trained into surrounds and ornamental shapes. Several trees and plants were introduced by the Huguenots, refugees from the Low Countries. Herbs and fish ponds became important.

In the late eighteenth century the fashion for laying out the 'grounds' became popular. Fruit and vegetables were grown in the vegetable garden, surrounded by high brick walls. William Kent and his successor Lancelot, or Capability Brown, were the

Landscape architects for this. The name Capability was coined because of his comment 'I see great capability of improvement here'. There were water features, artificial ruins and grottos based on classical designs. At Killerton Sir Thomas Dyke Acland chose John Veitch as his landscaper. Many of the magnificent trees and plants in the gardens were collected by J. Veitch and other intrepid plant hunters. They reached the wilds of China, Japan, South America and the Himalayas. These are the vistas mentioned earlier. A local example is on the private estate of the Fortescues at Castle Hill near Barnstaple. The eye is drawn from the foreground, down to the splashy stream in the valley, over the bridge and up to the arch on the opposite hill.

This is still being enjoyed by succeeding generations.

Anon

St. Mary's Christmas Quiz Results (Continued from previous page)

Put lower limb into 'ings': leggings
Sleep ...! Wear them! Tights
What a dog does when he is tired: pants
A knife and also a fashionable shoe: Stiletto
What a flea, a horse and some athletes are: jumpers

Bible:

OT queen eaten by dogs: Jezebel
OT First exponent of viticulture: Noah
OT prophet nick named 'Old Baldy': Elisha
The Apostle Matthew's first profession: tax collector
Jesus saw him up a Sycamore tree: Zacchaeus
Which tree bore forbidden fruit? The Tree of Knowledge
He fell asleep during St Paul's sermon and fell out of a window: Eutychus
K(3)=M or WM: 3 Kings=Magi or Wise Men
Female Judge: Deborah
Hostess complained to Jesus that she was left to do all the work: Martha

ST. MARY'S CHURCH – CHRISTMAS BAZAAR

Members of St. Mary's Church would like to thank everyone who supported the Christmas Bazaar – the stallholders, ladies who provided the teas, those who donated goods for stalls and raffle and all who came on the afternoon.

Special thanks to the children and staff of Morchard Bishop Primary School who entertained with hand bells, flutes and violins.

All your efforts helped to raise £750 for St. Mary's Church.

**TRADITIONAL
CHINESE
ACUPUNCTURE**

available in Winkleigh

Beneficial for many health problems
Including digestive disorders, stress
and anxiety, tiredness, pain,
and many other illnesses.

For further information or
to arrange an initial appointment

please call
Sarah Flower Dip.Ac.
on Tel: **01837 83145**
(24hr ansaphone)



**PRANA HOLISTIC
HEALTH AND BEAUTY**

Fox and Hounds Country Hotel
Eggesford, Chulmleigh
EX18 7JZ, Devon
Tel: **01769 581 554**

email: info@pranaholistichealth.co.uk
Web: www.pranaholistichealth.co.uk

****New Therapy: Hot Stone
Massage****

*Reflexology, Aromatherapy, Indian
Head Massage, Kundalini Back
Massage, Organic Facials, Waxing,
Manicure & Pedicure, Make-up
Bridal and Relaxation Packages*

**Own brand Natural & Organic
Skincare!!**

Gift Vouchers available

**Spring & Summer Promotions
on the website**

Member of BABTAC
Member of British Wheel of Yoga
Full Professional Liability
Insurance



**Charlesworth Nicholl & Co
SOLICITORS**

Your Friendly Local Lawyers

- Residential
- Agricultural
- Commercial
- Family Matters
- Leases
- Landlord & Tenant
- Probate
- Wills

Free initial half hour's advice
Easy access and parking

Telephone: **01363 774706**
31 High Street, CREDITON
www.charlesworthnicholl.co.uk



ADVERTS

Open the door to new
business by advertising in
the Morchard Messenger

Advertisements are welcomed at a
cost of £5 per issue – so £60 for the
whole year of 12 issues

Please send or Email your draft to
the Editors (details on Page 6)

or else a hard copy may be left at
the Morchard Bishop Post Office



**Need help with
your PC?**

I am a Computer Engineer with over
11 years experience in the IT
industry and am available to help
with any of the following

- PC/Laptop Set Up or Repairs
- Virus Removal
- Back Ups
- Wireless Internet Connections
- Boot-Up Problems
- Printer Installation

....or virtually any PC-related
problem you may experience.

I live in the village and no job is too
small!

**Please call Dan on 07989
196214 or 01363 877596**

**"THE MORCHARD
MESSENGER"**



**The deadline for
articles, adverts
and notices for
the next issue
is:**

The 15th January

The Editors retain the right to
reject, edit, alter or correct
articles which are sent in for
publication.

Copy should be sent
preferably by E- mail to
messenger@rixey.co.uk

but may also be left at Morchard
Bishop Post Office or sent by
post
to the address below.

Keith & Christine Davies
Rixey Cottage
Broadgate Lane
Morchard Bishop EX17 6PL
Phone: 01363 877690

Postal Service.

This newsletter can be posted to
you monthly at a cost of £7 per
annum.

For this service please contact
Keith & Christine Davies on
01363 877690.

LSJD SERVICING

**AGA & RAYBURN SERVICING
OIL FIRED BOILER SERVICING
RECONDITIONED AGA'S
GENERAL PLUMBING**



**Registered
Technician**

**OFTEC AND GAS SAFE
REGISTERED TECHNICIAN
TEL: LUKE DENNIS
07813967390**

**MORCHARD BISHOP
GARDENING CLUB**

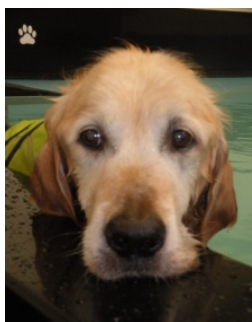
Wednesday 11th January at 7.30pm
In the Memorial Hall



**Social Evening with
Bring and Share Buffet**

Everyone welcome

**The Dogchester Hydrotherapy
& Rehabilitation Centre**



Free Dog health
checks
throughout Dec
and Jan.
50% off all
hydrotherapy
and puppy
swimming
sessions for Dec
and Jan

01363 884220 or
thedogchester@hotmail.co.uk
www.dogchestercollection.co.uk
Unit 3B, Yeo Vale Industrial Estate,
Lapford, EX17 6YQ



Olivers Gardening Services



Pruning, digging and weeding.
Regular gardening duties
Garden structures and fencing.
Greenhouse maintenance
and repair

email
oliversgardens@hotmail.co.uk
www.oliversgardening.co.uk

Oliver Smale
Morchard Bishop
tel: 07563 741 582

**MORCHARD BISHOP
C of E VA PRIMARY SCHOOL**

Celebrating Christmas Around the World



On Wednesday 7th December I joined parents, grandparents, governors, staff and, of course, the children in St. Mary's church for this year's Christmas production entitled 'Celebrating Christmas Around the World'. Each year had taken a country and in words and music told how Christmas was celebrated there. Of course our own traditional Christmas was not forgotten with the familiar nativity story being told.

We were also musically entertained by the hand bells and recorder groups. As usual the music and singing were of a very high standard with the children really enjoying the results of what must have been a lot of hard work in putting together this lovely Christmas production. Each year when I attend this event I really feel it is the start of my Christmas celebration. Thank you to all the staff and children and I wish you all A Very Happy Christmas and another successful year in 2012!

*Christine Davies
Governor*

MORCHARD MAIDS W.I.

Twenty Six members and guests enjoyed excellent entertainment on a recent visit to 'That'll be the Day' held at the Queen's Theatre, Barnstaple. This trip by coach is gaining popularity and more forays into theatre land will be planned.

The Village Hall coffee morning held on 19th November was well attended and members really went to town with their baking skills producing a wonderful array of delicious cakes and also providing raffle prizes.

At our meeting on Monday 21st November, a demonstration on how to stretch the budget to make Christmas gifts was given by Sarah Flower and Christine Stevens. An artistic table decoration and lots of ways to wrap presents with lovely ribbons, bows and novelties bought cheaply and adapted to make those special gifts look even more special also delighted the members.

*Dee Warren
Secretary*

HOSPISCARE - MENS WALK



Saturday 17th March 2012, 1pm

The Perfect day out for the boys! Enjoy a 10K walk around Exeter starting and finishing at the home of the Exeter Chiefs, Sandy Park.

Then on your return enjoy a pasty and a pint on us AND watch the 6 nations England vs Ireland match live on big screens in the luxury of the Exeter Suite.

A sponsored walk in aid of your local Hospice, Hospiscare. Visit www.menswalk.co.uk or call Hospiscare on 01392 688052 for more information.





Nursery and Pre-school

Set in a beautiful c200 year old school building, providing high quality Early Years provision.

Situated in the lovely Devon village of Chawleigh, within reach of towns such as Tiverton, Exeter, Crediton, South Molton, Okehampton and Barnstaple and the surrounding villages.

We provide high quality care and education for babies and children up to 5 years old. We are also registered for school aged children during school holidays. We deliver the EYFS to ensure the highest quality experience for children, with highly qualified and experienced staff.

We are open Monday to Friday, 8.00am to 6.00pm, all year round, (excluding Bank Holidays and Christmas). A light breakfast, tea and snacks are included, with a small charge for cooked lunch.

Contact us on 01769 580861
maureen@muddypuddlesnursery.com

www.muddypuddlesnursery.com
(website under construction)

no mess, no fuss, no dust!

THE GREEN SWEEP

Eco-friendly chimney & flue cleaning service – in the Heart of Devon

01363-772820

07771-648575

alan@thegreensweep.co.uk

MORCHARD BISHOP GARDENING CLUB



We had a good attendance for the Christmas meeting on Wednesday 7th December in the Memorial Hall. Following the usual list of notices the Chairman introduced Christine Skelmersdale from Broadleigh Gardens, near Taunton. She is a lecturer, writer and nurserywoman and her main interest is flowering bulbs and how best to use them in small or large gardens. She has the National Collection of small daffodils and has been growing bulbs for 40 years.

With a fine selection of slides she led us through the year offering advice and things to be avoided. She suggested that a good rule was to follow the three S's – small groups, simplicity and scatter as if bulbs had grown naturally from seed. Harmony is important and if planting in grass grow in "rivers" rather than groups. It will make mowing the grass much easier. Her talk followed a theme throughout and included a great deal of advice, too many tips to be included here. At the end of her talk she answered a number of questions and the Chairman thanked her for a fascinating evening.

The annual raffle for the hamper and other prizes was drawn and the hamper won by a lady very well known to the Chairman. The evening ended with mince pies and sausage rolls donated by the Committee and a reminder to all members that the Social Evening in January will be a "Bring and Share" supper.

Colin Carrington

BELLYDANCING

Thanks again to everyone who has supported bellydance or ShimmyFit classes in and around the village throughout 2011. We have enjoyed our classes, making new friends, getting fun exercise and especially the chances to dance out at the family fun day and at Lapstock amongst others.



ShimmyFit exercise class on a Thursday is taking a break until the spring, but if you are interested in coming to the drop in sessions at the village hall do let me know and I will make sure you know when they are starting up again. The students on the Bellydance courses asked for an extra couple of classes this term so although term officially finished at the beginning of December we carried on dancing with extra classes nearly up to Christmas which was great fun.

With the new term starting on January 10th it's a far shorter break for me to write the new choreographies in this time and the Intermediate class have asked to study Tribal style for another term, so a dance filled Christmas for me preparing for the new terms.

We also managed to sneak in one last social event with a Christmas dinner with glitter and sparkle.

We are hoping to have another hafla/party at the end of next term and there are other possible events in the pipeline during the summer so it'll be a great time to come and join us this January.

Happy New Year to everyone, and I look forward to seeing some of you in classes this coming year,

Jo Ashbeth Coffey.
jo@shimmyfitdevon.co.uk
077 66 342 147



JUBILEE CELEBRATIONS

The second Meeting to organise the Diamond Jubilee celebration in June 2012 was held on 28th November, again with huge village support, in the Sports Club.

The Programme for the Jubilee long weekend is gradually being firmed up and is as follows:

Saturday evening 2nd June

The view of the meeting was that to hold events on the Saturday as well as full day events on Sunday and Monday was a bit OTT.

Sunday afternoon 3rd June

Jubilee walk with cream tea afterwards organised by the Chapel

Monday 4th June

- Church bells rung at 10.30am
- Church service at St Mary's 11am with Coronation of the school's Jubilee King and Queen
- Church bells rung from 12 noon until 12.30pm
- Street party in Church Street from 12.30pm until 3pm approx. everyone encouraged to wear 50's style clothing. Open invitation to all residents of Ridge house. The food will be "Bring and Share"
- Procession to Playing Fields with carriage for the 'King and Queen' and accompanied by a band.
- Games for children, equipment provided by the School
- Dance in the evening with 50's/60's music by "The Changes" and B-B-Q
- 10.20pm (approx) lighting of the beacon on the Church tower. (The lighting time will be advised as part of the National Beacon lighting programme.)
- All Day: "The Best Dressed House". More information and entry forms nearer the date. Watch the Morchard Messenger!

The church tower beacon has been registered on the National Jubilee Register for the over 2,012 beacons that will be lit on 4th June.

The application for the closure of Church Street on 4th June has been submitted to DCC.

The Dance band "Changes" has been booked

Jubilee Mugs will be ordered to be given to all children living in Morchard Bishop under secondary school age and also available on sale.

A fund raising event will be held - possibly a 'Hoe Down' in Mid April

Some funding has been promised from both the Parish Council and our Ward member Michael Lee.

**OUR NEXT MEETING IS 30th JANUARY at 7.30pm
at the SPORTS CLUB - ALL WELCOME**

MORCHARD BISHOP GARDENING CLUB



A secretary for the Club. No pay, no perks, just feel good as part of the "BIG SOCIETY".

Please contact Colin on 877442 or Sue on 877355



Local art gallery and ceramics / a select range of gifts / locally made jewellery and cards / soft furnishing / flowers for weddings, funeral tributes and special events

new website: www.studioamaryllis.com

Church Street Stores, Church Street, Morchard Bishop, Crediton, EX17 6PQ
07970 882393 /

DOGGIE-BAG APPEAL



Toys Collars Chews Food Treats
Please help a tail wag and whiskers twitch this Christmas at the Blue Cross by filling a bag of doggie goodies.
(Cat or dog) Big Wags, Woofs and licks

*Please bring your Doggie-Bag to the Dogchester, Unit 3B, Yeo Vale Industrial Estate, Lapford, EX17 6YQ
or telephone Trudy for more information on 01363 884220*

Charity Registration number 224392

J B Electrics

Domestic & Commercial
Electrician
Local, friendly and reliable.
Fully qualified to 17th
Edition.

Jon Bradford

m: 07834 806594

t: 01363 773844

email:

jb.electrics@hotmail.co.uk

YOUR PARISH COUNCIL

Name	Functions	Tel
Bob Patten	Parish Clerk	07914 821309
Keith Davies	Chairman, P3 committee & Memorial Hall Representative	01363 877690
David Grant	Vice Chairman	01363 877400
Liz Cousins	Playing Field Representative	01363 877677
Roger Field	Snow Warden & P3 committee	01363 877631
Sarah Gilbard	Councillor	01363 877222
Nick Heath	Councillor	01363 877588
Jan Hinchliffe	P3 committee	01363 877412
Dawn Parkhouse	Councillor	01363 877263
Les Partridge	Councillor	01363 877255
John Snell	Councillor	01363 877367
Frank Yendell	Churchyard committee rep.	01363 877528

District Councillors:

Michael Lee (Cons) Tel: 01363 772671/776024
 Margaret Squires (Cons) Tel: 01363 84337

MCA WINDOWS LTD

- uP.V.C. Replacement Windows, Doors
 - Conservatories
 - Fascia & Guttering
 - Patio & French Doors
 - Garage Doors
 - Repairs and Maintenance
- Free Advice & Quotations**
Full 10 year guarantee

www.upvcwindow.info
 16A Marsh Lane, Crediton, Devon EX17 1ES
 Tel Mark: (01363) 774199

ARCHITECTURAL SERVICES

RICHARD ARCHER Est 1987



EXTENSIONS CONVERSIONS NEW BUILDS
 PLANNING & BUILDING REGULATION APPLICATIONS

Copplestone SIMON ARCHER M: 07966 347 957
 Devon E: simon@architectural-services.org
 Visit the website: architectural-services.org

DESIGN DRAWINGS SURVEYS ADVICE



MORCHARD BISHOP FOOTBALL CLUB



NOVEMBER RESULTS

1ST XI

10th November Morchard Bishop 2 Willand 4
 19th November Beer 1 Morchard Bishop 2
 26th November Morchard Bishop 4 Heavitree 4

2ND XI

5th November Topsham 3 Morchard Bishop 7
 12th November Newton St. Cyres 1 Morchard Bishop 5
 19th November Morchard Bishop 3 Stoke Hill 1
 26th November Amory Park Rangers 1 Morchard Bishop 2

HOME FIXTURES – JANUARY 2012

7th 1st XI East Budleigh (A) 2nd XI No Game
 14th 1st XI Thoverton (A) 2nd XI Silverton (H)
 21st 1st XI Budleigh Salterton (A) 2nd XI Amory Argyle (A)
 28th 1st XI Alphington (A) 2nd XI Hemyock (H)

KICK OFF TIMES UNTIL FURTHER NOTICE ARE 2.15PM

COME AND SUPPORT YOUR LOCAL FOOTBALL TEAMS
 LIGHT REFRESHMENTS ON SALE DURING THE GAME

WOOLSGROVE COURT HAIR SALON



London Stylist
 Specialist in cutting and colour

Using
ORGANIC
 Schwarzkopf
 Essensity



Woolsgrove Court Health Centre, near Crediton
 01363 84226 www.woolsgrovecourt.co.uk



RENEWABLES

Solar & Wind Installations

Get paid for the electricity you produce

tel: 07545 241302
www.djhrenewables.co.uk

Husseys

Established 1777

Chartered Surveyors, Valuers
& Auctioneers
Rural Property, Land and
Agricultural Valuation & Sales

Free Market Appraisals
Without Obligation
Contact:

Mark Langdown FNAEA MARLA
Tel: 01392 285 996
mark@husseys.co.uk
www.husseys.co.uk

Alphin Brook Road
Exeter
Devon
EX2 8TH



PARISH NEWS

Things seem to be happening. The landscaping at Bishop's Meadow has been completed to general acclaim "a good job," while the plans for the Queen's Diamond Jubilee are firming up nicely; the next meeting will be on Monday 30th January at 7.30 pm at the Sports and Social Club. The Parish Council has considered Mid Devon District Council's Green Infrastructure Plan, which can be found on MDDC's website under GIP, and some capital plans have been produced. What we must do now is to not lose sight of the plans, nor accept "no" for an answer.

On the planning front only one application was received, which was to regularise an existing situation at Bishop's Meadow. Eight planning decisions were received, all granted except for the erection of a dwelling at Middlecott. Similarly an appeal to overturn a planning refusal to rebuild an office and store at Rolstone bungalow was dismissed. One of the more interesting events was a pre-planning meeting for an eco-home at Woolsgrove Court; with current technology it is possible to build a house that uses absolutely minimal inputs of resources and has minimal outputs of waste.

A year ago we were battling with snow, but now that we have a Snow Warden and a gritter and soon to have trained volunteers and grit and salt, the weather is wet and windy. With luck, a Snow Warden will work in much the same way as an umbrella – as long as you have one you won't need it! In many ways this is the way that things are going to go as more responsibility is pushed down to a local level and self-help. As well as the financial constraints, this is also the principle behind the Localism Bill.

Finally, I would like to wish you all a happy Christmas and a bright and prosperous New Year.

*Bob Patten
Parish Clerk*

Septic Tanks Emptied

- Phone/fax: 01805 601286
- Mobile: 07831241531

Leave a message, we will return your call and make arrangements at your convenience.

Peter Hearn Haulage Ltd

E.J. Taylor. Tech RICS
Building Surveyor

**ADVICE FOR ALL YOUR
PROPERTY PROJECTS**

PLANNING AND BUILDING REGULATION
APPLICATIONS
STRUCTURAL AND MEASURED SURVEYS

☎ 01363 877 332
linhay@ricsonline.org



CREDITON FOODBANK

Christmas Hampers

Since it was launched just over a year ago, Crediton Foodbank has received over 90 referrals for people living in and around Crediton. Thank you so much to everybody who has helped to make it possible for us to meet this need.

We are hoping to provide small Christmas hampers for some of those families and individuals who have needed this help so far. We recognize that Christmas can be a difficult time for many people who are already struggling financially. We would like them to know that the churches in Crediton care about them and would like to bless them in this small way.

If you would like to contribute towards the Christmas hampers this year, here are a few ideas of the type of things it would be wonderful to bless people with, in addition to the basic food supplies we provide:-

Mince pies, Yule logs, small Christmas cakes, Christmas puddings, Chocolates, Special biscuits, Selection packs, small toys or gifts (eg toiletries etc).....

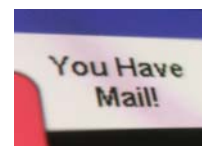
Please place any donations for the hampers in the Foodbank box in your church. Thank you so much for your generosity. We trust and pray that this will be another practical demonstration of the amazing love that God has for the people we've already been able to serve through the Foodbank in Crediton.

Please contact Valerie Beardsworth about contributions which can be left at St. Mary's Church.



LETTERS

We welcome articles and letters. However we would like to point out that the views expressed are those of the writer and not necessarily the views of The Morchard Messenger.



While we may, albeit somewhat reluctantly, withhold names upon request, we regret that we will NOT publish letters that are submitted anonymously.

Ed.

Dear Editors

By way of the *Morchard Messenger* we would like to thank everyone for their concern and support following the M5 accident in which we were involved. No prescribed treatment or medicine could have had more of a healing impact than the cards, messages, telephone calls, and kind words when walking around the village. What a wonderful community!

We are doing well. Jackie is hoping to return to work in January, at least part-time, and to have made a full recovery within six months, possibly sooner.

Best wishes to everyone for 2012.

Bob and Jacqueline Patten

Dear Editors

I would like to take this opportunity to sincerely thank my many friends in the village, for all the help and support I have received since my illness. I have been overwhelmed by the friendship and support I have had!

Over the years I have lived in many different counties and abroad, and have never found the friendship and support, that I have found in Morchard Bishop! I feel very privileged to live in such a special village.

I would also like to take this opportunity to wish them all, a very **Happy and Healthy Christmas and New Year.**

With gratitude and thanks to you all,

Valerie Wilson-Smith

Dear Editors

The Chairman and Management Committee of the Memorial Hall would like to take this opportunity to say thank you to every one who has supported the Hall in the fund raising events and coffee mornings throughout the past year .

We would like to wish every one a very Happy Christmas and a prosperous New Year and hope they will continue to support The Hall during 2012

Anton Heal

Dear Editors

Ref: **Car Parking at Memorial Hall**

I would appreciate the chance to respond to the above article in the Messenger.

There have been a number of occasions recently when residents of Church Street have been unable to park anywhere near their houses due to people attending functions in the Memorial Hall.

Residents of Church Street are unable to place signs similar to those at the Memorial Hall to stop parking outside our houses.

On several occasions I have parked in the School car park, which has been empty, and walked home.

Finally, all residents of Church Street **are** considerate when parking, but do all visitors think the same? I think not. Maybe **residents only** parking is the answer.

Barry Trask

RECYCLING – CHRISTMAS PERIOD COLLECTIONS

Please refer to your annual recycling calendar for Christmas and New Year waste and recycling collection days.


Please contact Customer First on 01884 234382 or email customerservices@middevon.gov.uk if you require a waste collection calendar. Collections will return to normal on Monday 16th January.

Check the web site www.middevon.gov.uk for any changes that may result in times of extreme weather.


Christmas trees can be put out for collection with your brown bin for composting or taken to Recycling Centres at Ashley, Punchbowl or Pinbrook.

For more information go to: www.devon.gov.uk/index/environmentplanning/recycling/recycling_centre.htm

WOOLSGROVE COURT
the complete holistic health centre...



Beauty treatments * Massage * Reflexology * Reiki
* NLP * Hypnotherapy * Healing
* B&B * Chiropody
* Conference/workshop space
...where you can relax completely
Try our free taster sessions



Woolsgrove Court Health Centre, near CREDITON
01363 84226 www.woolsgrovecourt.co.uk

****AERIALINE DEVON** 0800 0930 625.**
Freeview - Freesat - CCTV - Installation & maintenance
CALL FOR DIGITAL HD AERIAL & SATELLITE

TVs, PVRs, Receivers
supplied and tuned - 10% DISCOUNT FOR PENSIONERS

Tel: **0800 0930 625**
07970 963450 Fax: N/A
Email: aerialine@tiscali.co.uk
www.signalsolutions.org
CRB SECURE..CSCS Registered..



St Boniface 
Veterinary Clinic 

47 MILL STREET
CREDITON, DEVON, EX17 3AA
01363 772860
A friendly mixed practice
24 HOUR EMERGENCY SERVICE
Consultation and Home Visits
by appointment
Open Saturdays and late evenings
FREE PARKING

We are moving
From March 2012 our new
address will be Exeter Road,
CREDITON, EX17 3BN
www.stbonifacevets.co.uk





Grahame A'court
Dip.S.I.A.D.
Architectural Services

House Design
Extensions
Barn Conversions
Planning Applications

*If you have ideas and would like
them drawn up for the
Local Planning Authority
call me on 01363 877496*

**Blossom Court
Hair and Beauty Clinic
Lapford**

For both men and ladies
01363 83122
TUESDAY – SATURDAY
LATE NIGHT THURSDAYS

OAP RATES
TUESDAYS AND WEDNESDAYS

For all hair and beauty treatments
Call for an appointment



**EDWORTHY
COMPUTING LTD**
Unit 1, Oakfield, Bow, Crediton

Computer & Laptop repairs & virus removal
New & Used computer & laptop stockists
IT support & Website design
Printers & Consumables
Prompt & Reliable Call-out service

t: **01363 881157**
e: sales@edworthycomputing.co.uk
www.edworthycomputing.co.uk

PARTRIDGE FARM
RARE BREEDS – TIVERTON DEVON

LOCAL FRESH AND FROZEN
RARE BREED
PORK, BEEF AND LAMB
&
WEANERS FOR SALE




FOR PRICES AND AVAILABILITY,
VISIT:
PARTRIDGEFARMTIVERTON.COM

PARTRIDGE FARM
TEMPLETON TIVERTON
DEVON EX16 8BN

TELEPHONE 01884 242 657
ORDERS@PARTRIDGEFARMTIVERTON.COM

Copelander Garage
Morchard Road



BEFORE you book your car
into any other garage
Look what we can offer....

- **FREE Collection and Delivery service**
We will collect your car from your home or work and deliver it back to you when the job is complete
- **Professional courteous Mechanics with over 50 years experience**
- **MOT test for just £44.99**
- **Service and Repair to all makes and model of Vehicle**
- **Tyre, Exhaust and Battery Centre**
- **FREE Health check or Winter check**
- **Alloy wheel refurbishment & Valet service**
- **Oil and Filter change from £19.99**
- **24 Recovery and "Out of Hours" Mechanic**

01363 84886
Ellacombe Farm, Morchard Road,
Devon EX17 5LS

KERRY PLANT   

Complete Excavation Service
No Job Too Small – FREE Estimates

➢ JCB (4CX)	➢ Self Drive Hire
➢ Mini Digger	➢ Mini
➢ Drainage/ Ditching	➢ Digger/Dumper
➢ Foundations	➢ Twin Drum Roller
➢ Landscaping	➢ Small Plant
➢ Septic Tanks	➢ Wacker Plates
	➢ Mixer/Disc Cutter

**Much more available,
please phone for more details;**
Home: **01363 85301**
Mobile: **07976 641606**



PURE ALPACA POO

WONDERFUL FOR
GARDEN/ALLOTMENT

USE STRAIGHT AWAY/ADD TO
COMPOST/DILUTE FOR
WATERING

50P PER BAG (APPROX 15 KGS)
OR 5 BAGS FOR £2
Proceeds to St. Mary's Church

Please Call 01363 877616 or
07748 604913



DEVON ARBORICULTURE

All Aspects of Professional Tree Surgery

- Pruning
- Felling
- Crown-Lift/Thin/Reduce
- Pollarding/Coppicing/Dismantling
- Pest & Disease Diagnosis/Treatment

All Hedge Trimming/Reduction

NPTC, NCH Arb and
Tech Cert (Arbor A) Qualified.

Public Liability cover of £5m

All work carried out to BS3398:2010
'Recommendations for Tree Work'

**Free site visit & quote
For a friendly & professional
service please call**

**Nick on: 01363 777719 or
Pete on 0782 556 3228**

HEDGEROW PRINT

Phone now for a Competitive Quote

Deliveries in your area

01363 777595

FOLK TALES CORNER

Old Beginnings

Do you know the song "The Raggle Taggle Gypsies"? Sure you do! It's the one in which the lord comes home to find his wife has traded all the luxuries he offers for a nomadic life in the wild and gone off with the travelling folk. What few people know is that there is a song that goes before the famous one. "The Gypsy Bride" tells how the girl was abducted from her people by the nobleman and married against her wishes. So in the later, more well-known song she was not running away: she was going back home.



Discoveries like this can change one's whole perception of a story. I have recently come across a string of variations on a story called "The Princess On The Glass Mountain", the meat of which is that a princess sits on top of a glass mountain with a golden apple and the chap who can get the apple also gets to marry the princess. Suitors from all over embarrass and exhaust themselves for three days whilst the hero of our tale, using the help of a series of magical horses and increasingly flashy armour, gets a little further up each day until he wins the fruit and the girl.

How he gets his magical help is the business of the first half of the story and varies wildly but fortunately that does not concern us here. What I find of most interest is that whilst the winning of a royal spouse elevates the adventurer from rags to riches, in some versions the hero starts off as a prince who loses his position and wealth, giving the story a more circular riches-to-rags-to-riches-again form. This apparently disposable preface is common in other tale types too. Cinderella, in her assorted permutations, is sometimes a princess brought low and other times a poor girl brought even lower.

So is there a reason for this fundamental switch? Surely everyone loves a poor-child-done-good yarn so why change it? Or if the silk-to-sacking-and-back tale is the original why did it get truncated?

Unlike many other changes in stories this one has a very distinct and practical purpose which has nothing to do with the workings of the story and everything to do with the audience. Back in the medieval world, the ruling classes were very particular about purity of blood and would have had a storyteller thrown out (or worse) for suggesting that a princess (or prince) might marry a common stable boy (or serving girl), no matter how handsome (or pretty) they might be. These feudal aristocrats would happily seduce their underlings but never marry them. So a noble birth was essential for any character the teller was hoping to give a royal wedding to at the end of the tale. Conversely, the poor had no such concerns and would light up with hope, as we do now, at the thought of one of our number being able to break out of poverty or ordinariness in to the celebrity high life of sovereignty. Thus these tales developed a convertible form for easy portability as the storytellers of old hiked from rural settings to royal courts and back, de-rigging and re-attaching the front ends of the stories to suit the audience.

The modern audience has seen The Raggle Taggle Gypsies gain in popularity. In our post "Lady Chatterley" age, where romantic fiction introduced previously content wives to the idea of substituting a rugged and exciting all terrain model for him indoors, the introductory Gypsy bride was quietly dropped to fit this fantasy. The full story though, with explanatory preface in place, is transformed from destructive rebellion into wholesome restoration.

So if you are planning any new beginnings remember what you might be looking for is an old beginning.

...here's to living happily ever after, until the next adventure.
The Travelling Talesman

www.thetravellingtalesman.co.uk



Tel: 01363 85102

**MORCHARD ROAD, CREDITON,
EX17 5LP**

A Warm Welcome

Owners Gordon, Janet and Simon Robinson welcome you to the **Devonshire Dumpling**.

Offering traditional pub food, with **produce sourced from local suppliers** and cooked by hands-on-chef Gordon. With our extensive menu there's guaranteed to be something to suit everyone's taste!

Traditional Pub Food

For a great value lunch the '**Platinum**' menu is available **Monday to Saturday 12pm - 2pm**. Or join us for Sunday lunch with our **scrumptious roasts** lovingly served under Janet's watchful eye ensuring every aspect of your meal is perfect.

Camra Recommended

The Devonshire Dumpling is **recommended by Camra** and featured in their Good Beer Guide 2011. Simon prides himself on his beers and there is always a choice of local real ales available.

Bed & Breakfast with Wi-Fi Internet available

**Crossways
Woodland
Burials**



If the existing choice of funerals does not seem appropriate nor meets your wishes maybe we can help.

Phone 01647 24382
and speak to Martin or Julie Chatfield

www.crosswayswoodlandburials.co.uk



FLOORING SPECIALISTS
CARPETS/HARDFLOOR FINISHES/WOOD

Carpets supplied and fitted

• Free Estimates

• Sand & polish of existing wood floors

• New wood floors installed

• Both domestic & contract work undertaken

TEL: 01363 877730
MOBILE NO: 07976 603041
EMAIL: sales@masflooring.com

MIDDLE LEIGH, MORCHARD BISHOP,
DEVON EX17 6RH

Garden Maintenance



For all your jobs around the garden contact George in Morchard Bishop on 01363 877383 or alternatively you can contact me on my mobile 07548920861

- Grass cutting & strimming
- Weed control
- Shrub reshaping & pruning
- Hedge cutting & trimming
- Hedge laying (steeping)
- Dry stone walling repairs
- Chainsaw work
- Jet washing
- And any other job within reason

I am happy to offer regular maintenance, at reasonable rates whether it is weekly, fortnightly, monthly, quarterly or even annually.

MH Carpentry & Building



- Barn conversions, New build.
- Green oak work.
- Loft conversions
- Cut roof construction.
- Extensions. Renovations.
- Re-furbishments.
- Dormers & Velux windows.
- Rendering & plastering.
- Stonework. Blockwork.
- Hard and softwood flooring.
- Kitchen fitting.
- Garden structures

All aspects of House Maintenance.
House painting undertaken.

Phone: 07540 956379

www.mhcarpentryandbuilding.co.uk



**The Complete
Property
Maintenance
Service**

Kitchen & Bathroom
fitting,
Tiling & Plumbing,
Painting & Decorating,

Matthew Smith

Telephone: 01363 85130
Mobile: 07891 489355

**Happy 70th Birthday David!
on Christmas Day**



Lots of Love and
Best Wishes

from

Gillian, Richard, Liz,
Bethany and Benjamin
xxx